

# Family and Community Engagement



# Children's Aid

## Our Mission

The Children's Aid Society helps children in poverty to succeed and thrive. We do this by providing comprehensive supports to children and their families in targeted high-needs New York City neighborhoods.

- Education
- Social emotional
- Health
- Family and Home

## Community Schools

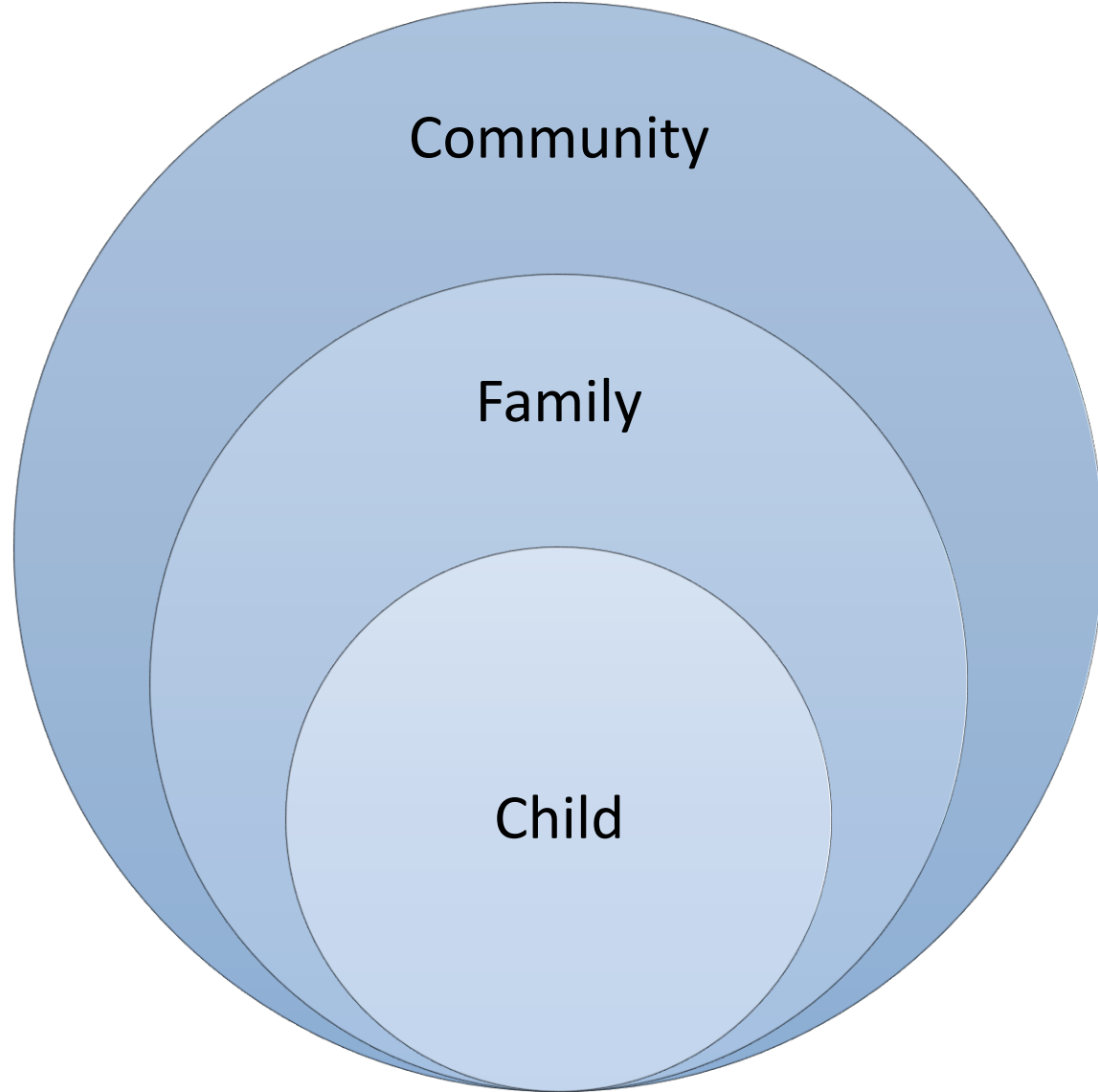


Our Work

Community

Family

Child



# INVESTING IN INNOVATION

---

Family Success Network

Expanding Children's Aid's

Family and Community Engagement Model

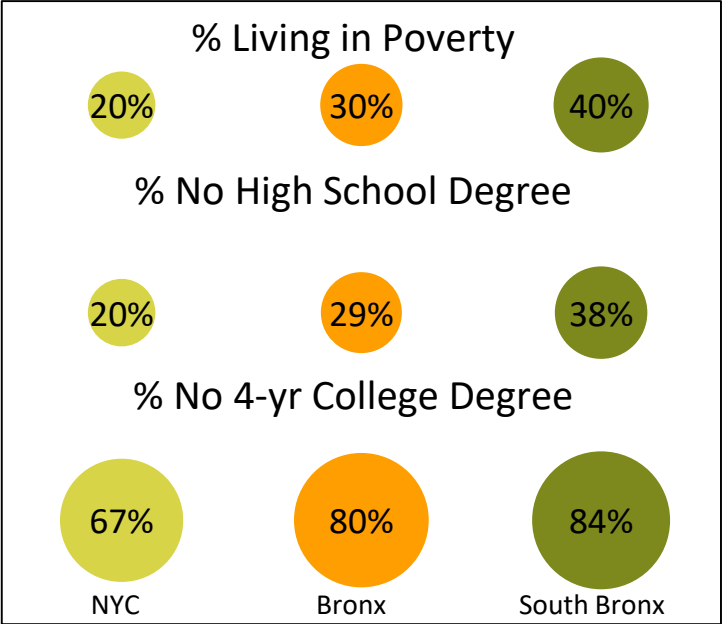
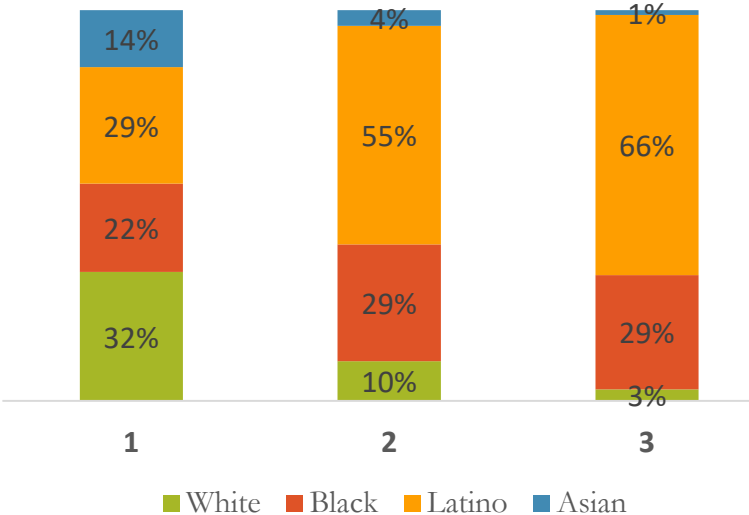
# South Bronx Data/Info

(Community Districts 1, 2, 3, 4 & 6)

Median Income

NYC: \$51,854  
 Bronx: \$31,665  
 South Bronx: \$24,338

Demographic Data





# Program Environment

- 9 schools on 4 campuses
- Grades: PreK-12<sup>th</sup> grade
- Total students: 2,660

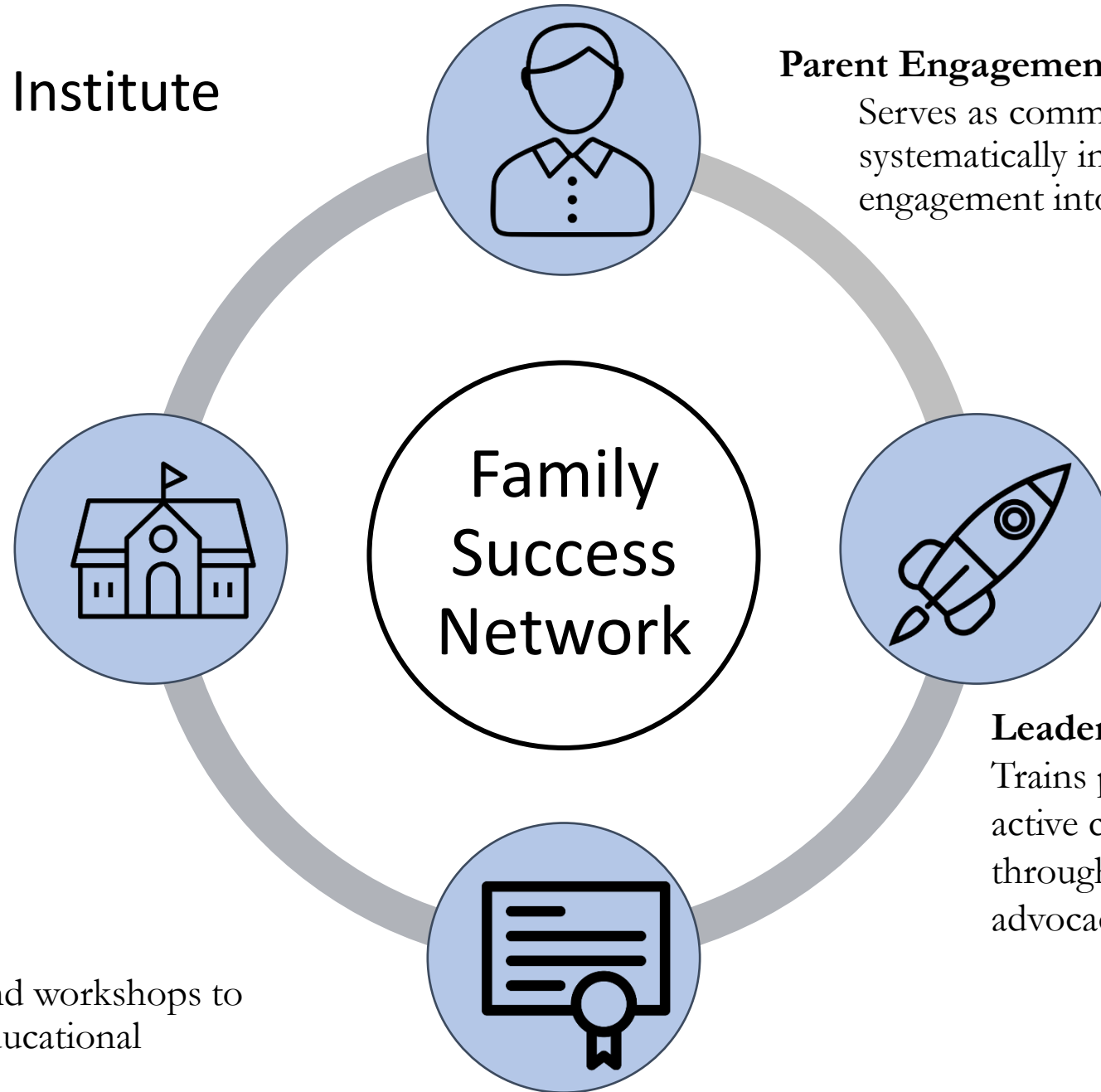
Average across schools:

- Poverty: 94%
- English Language Learners: 14%
- Students with Disabilities: 22%



# Parent Leadership Institute

## Four Key Elements



### **Parent Engagement Coordinator**

Serves as community leaders who systematically integrate parent engagement into schools

Family  
Success  
Network

### **Parent Resource Center**

Helps parents develop strong school and community ties

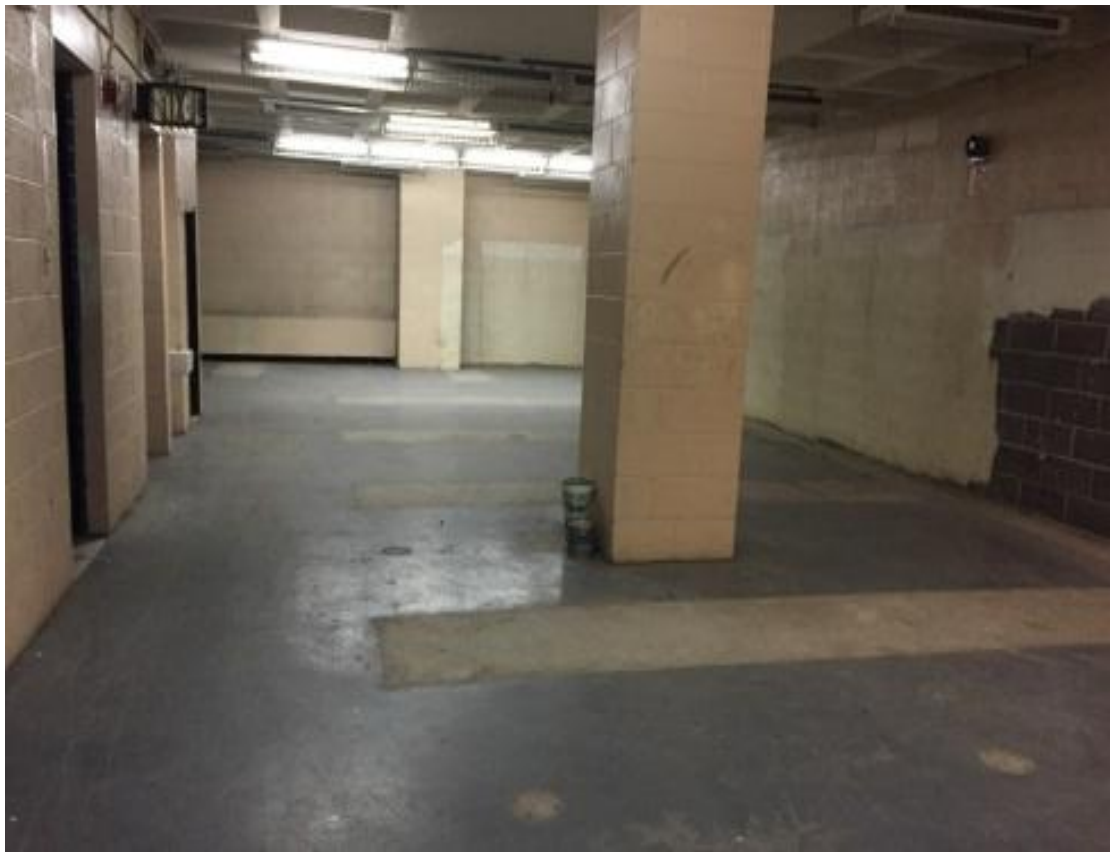
### **Leadership Development**

Trains parents to become active community members through volunteering and advocacy projects

### **Adult Education**

Offer parent classes and workshops to help build skills and educational confidence

# Parent Resource Center





# Research Findings-

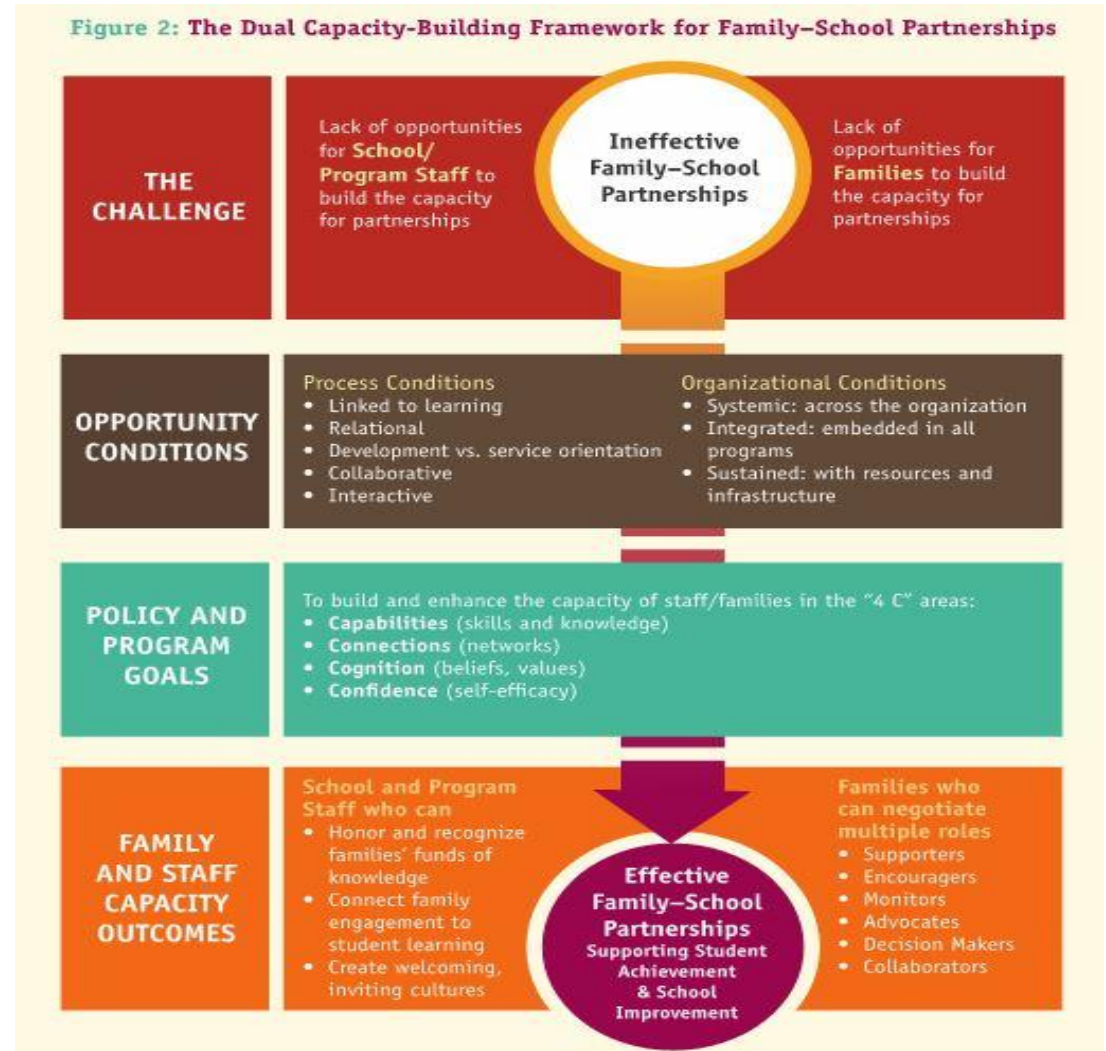
## *Broken Compass* (Robinson and Harris, 2014)

1. Parents across ethnic groups are **relatively similar** in the amount of engagement in children's schooling but the type of engagement differs substantially
2. **Many low-income parents across a wide spectrum want to be involved in their children's school lives**, but they often receive little support from the school system. For immigrant families, language barriers only worsen the problem.
3. Some parent involvement strategies work for some groups but not for others – **ONE SIZE DOES NOT FIT ALL** (pp. 82-83, Figures 4.11 and 4.12)

# Foundation of Parent Engagement Strategies

- Partners in Education: A Dual Capacity-Building Framework for Family-School Partnerships (Mapp & Kuttner, 2013)
  - Opportunity conditions for family engagement to flourish
  - Trust and respect are established between home and school
  - Families and school staff see each other as equal partners
  - Capacity building for educators and families to partner around student success
  - Orientation towards partnership with student achievement and school improvement being a shared responsibility

Mapp, K. L., & Kuttner, P. J. (2013). Partners in education: A dual capacity-building framework for family-school partnerships. Washington, DC: U.S. Department of Education, SEDL. Retrieved from <http://www2.ed.gov/documents/familycommunity/partners-education.pdf>



# Opportunity Conditions

## Process Conditions

- Linked to learning
- Relational
- Development vs. service orientation
- Collaborative
- Interactive

## Organizational Conditions

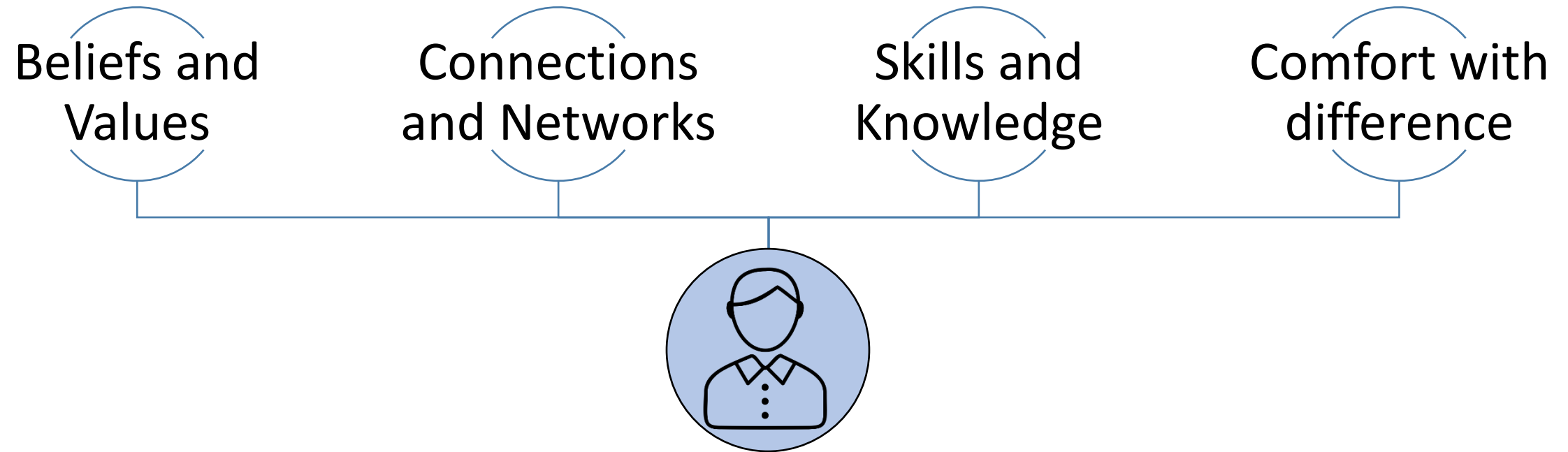
- Systemic: across the organization
- Integrated: embedded in all programs
- Sustained: with resources and infrastructure

Mapp, K. L., & Kuttner, P. J. (2013). Partners in education: A dual capacity-building framework for family-school partnerships. Washington, DC: U.S. Department of Education, SEDL. Retrieved from <http://www2.ed.gov/documents/familycommunity/partners-education.pdf>









Parent Engagement Coordinator

Mapp, K. L., & Kuttner, P. J. (2013). *Partners in education: A dual capacity-building framework for family-school partnerships*. Washington, DC: U.S. Department of Education, SEDL. Retrieved from <http://www2.ed.gov/documents/familycommunity/partners-education.pdf>

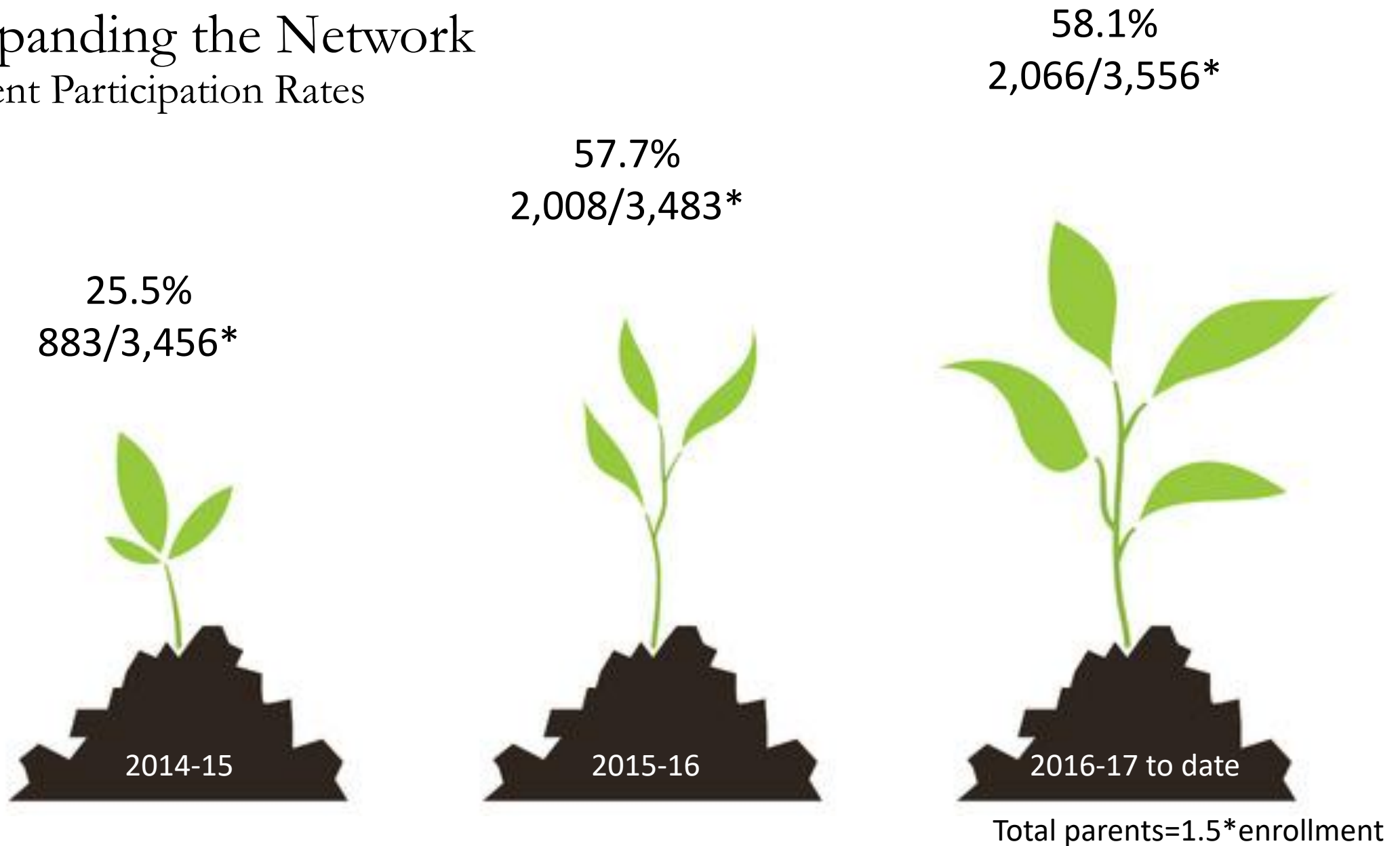
# 6 Domains of Parent Capacity building

- Community building
- Health and Wellness
- Social and emotional learning
- Adult and Career Education
- Home and School Connection
- Leadership and volunteerism



# Expanding the Network

## Parent Participation Rates



# LESSONS LEARNED

- Parent Resource Centers are critical in helping to establish trust, communicates the value of home-school partnerships and increases parent-to-parent networks
- Developing a shared leadership approach to supervision models parent/community engagement staff
- Assessing parent interests is key to robust parent engagement
- Learning and understanding culturally responsive practices from parents builds respectful relationships
- Home-school connections (teacher engagement) has increased staff and family relationships and increased families tool's to support learning
- Supporting the learning and growth of the entire community helps to engage all in community wellness



# QUESTIONS AND DISCUSSION

